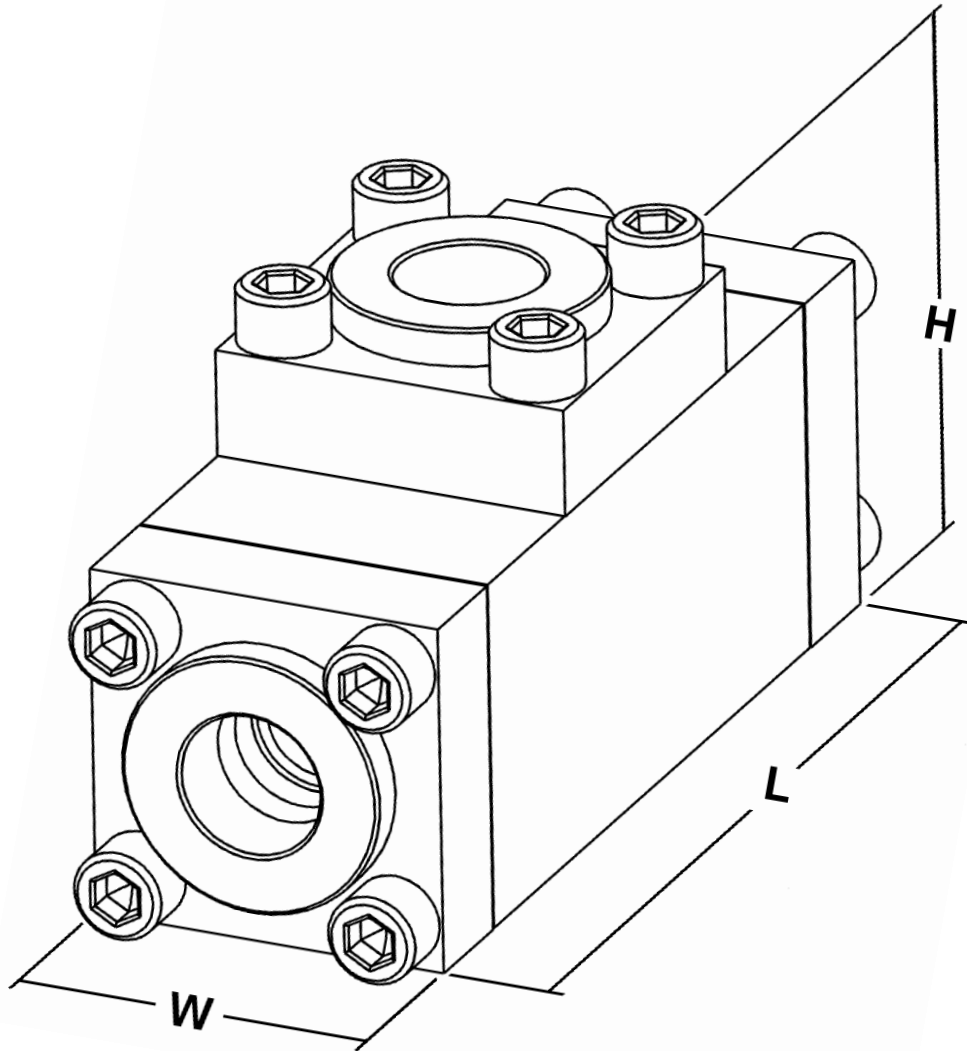


## SHUTTLE VALVE DIMENSIONS



	1/4"	3/8"	3/4"	1"	1-1/2"
H (Height)	1-1/2"	2-1/4"	3-5/8"	4-3/8"	TBA
L (Length)	4"	4"	6-7/8"	8-3/4"	TBA
W (Width)	1-1/2"	1-1/2"	1-1/2"	1-1/2"	TBA