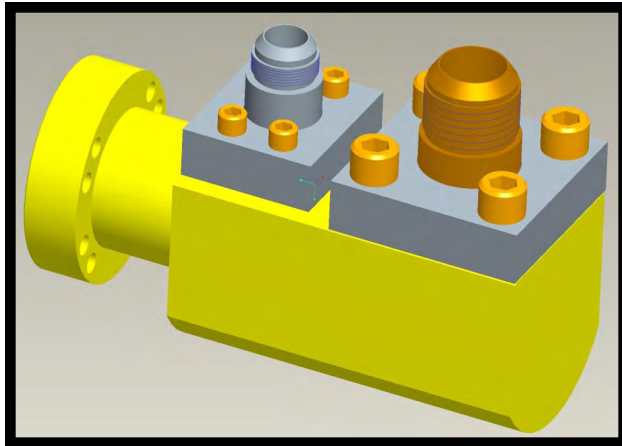


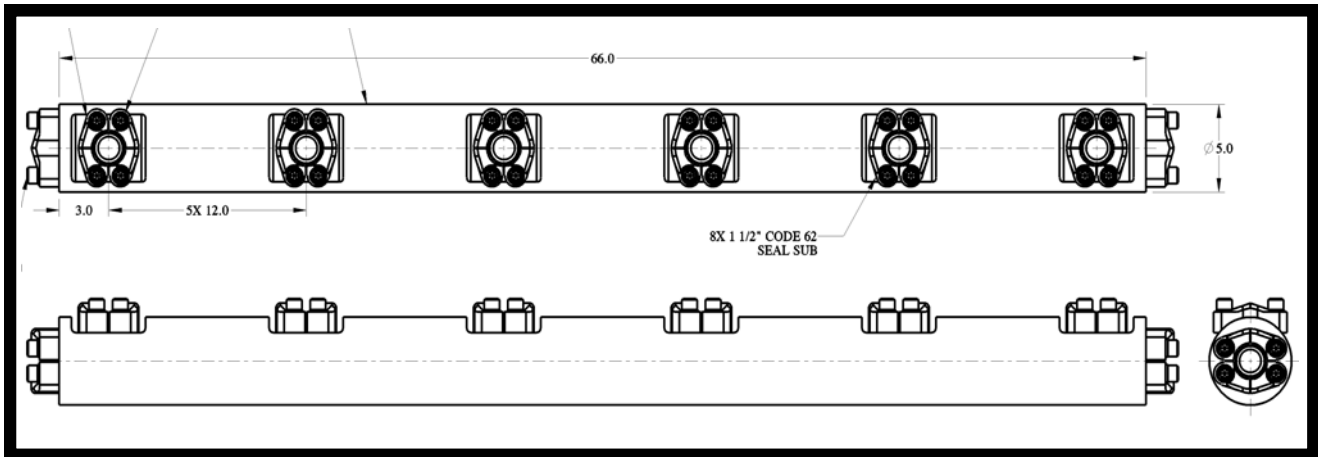
MANIFOLD SUPPLY HEADER



The Manifold Supply Headers are designed to be mounted on an existing valve such as a POCV, or to any existing port connector to add a secondary supply connection. Recommended hardware for mounting the manifold to the POCV is the existing hardware supplied with the POCV. The new outlet connections are 1" and/or 1-1/2" Code 62 Seal-Sub with SAE adapters used to convert to hose connections as needed.



ACCUMULATOR MANIFOLDS



DTL can manufacture accumulator manifolds for multiple bottles with Code 62 Seal Sub, NPT, or any other connection preferred. Manifolds can be manufactured from stainless or carbon steel, and can also be supplied with or without adapters and mounting hardware.